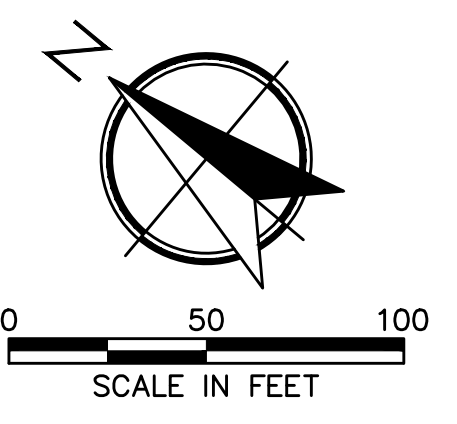
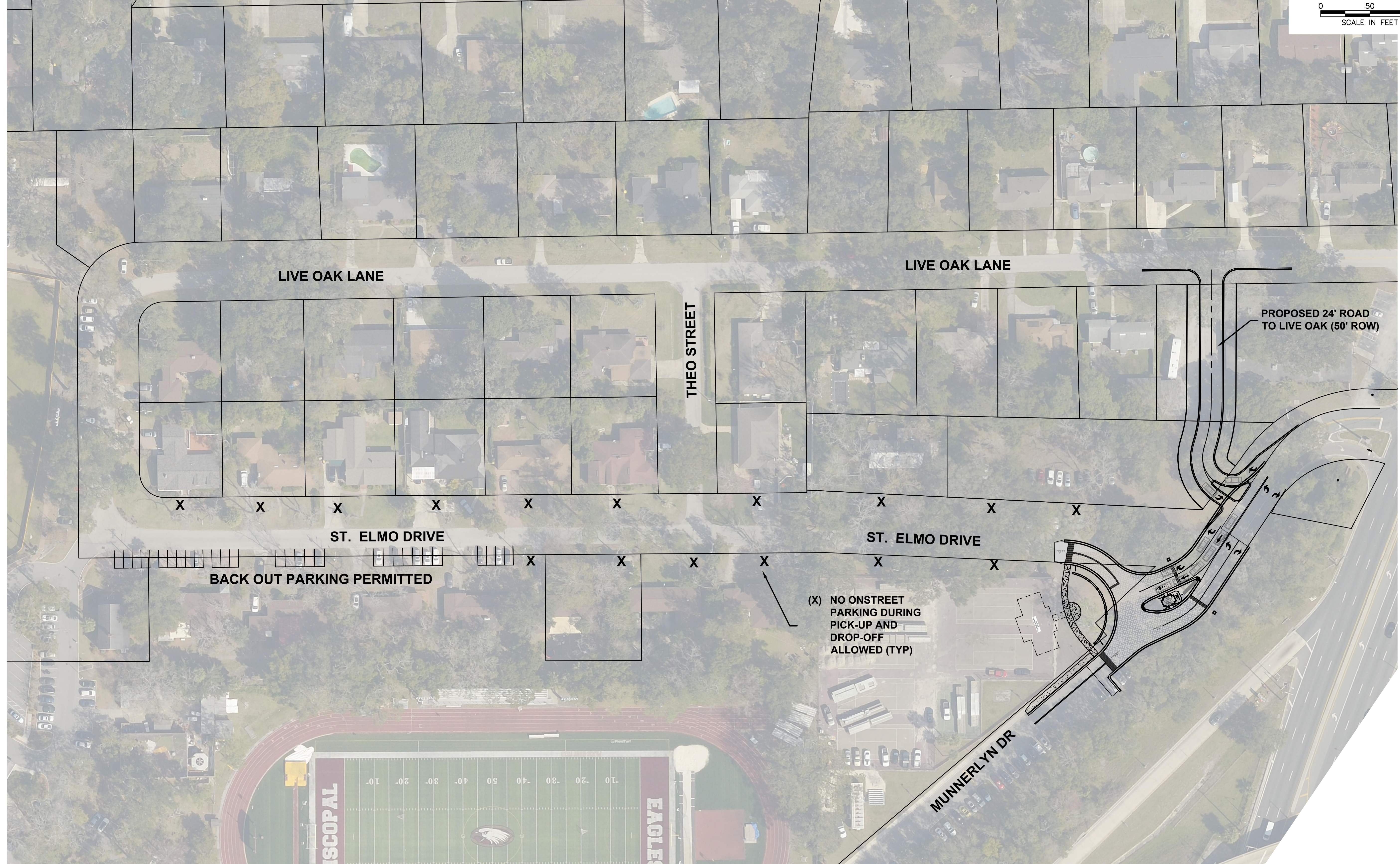


Project: File 20_2019 - 11:27am, By: eric.almond
P:\AE Projects\2017-17-23 Entrance\DESIGN\101-ST. ELMO ROADWAY MODIFICATION\ST. ELMO ROADWAY MODIFICATION EXHIBIT 2.dwg, 2/20/2019 11:26:48 AM, 1:09:24
Plot: Projects\2017-17-23 Entrance\DESIGN\101-ST. ELMO ROADWAY MODIFICATION\ST. ELMO ROADWAY MODIFICATION EXHIBIT 2.dwg



01-20-2019
ERIC J. ALMOND, P.E.
FL# 59246

| Date | Revision |
|------|----------|
| | |
| | |
| | |



AE JOB NO.: 17-23
DESIGN: EJA
DRAWN: LM
CHECKED: EJA
START DATE: SEP. 2017
PLOT DATE: 2-20-2019

ST. ELMO ROADWAY
MODIFICATION
EXHIBIT

EPISCOPAL SCHOOL OF
JACKSONVILLE
4456 ATLANTIC BOULEVARD
JACKSONVILLE, FLORIDA 32207

ALMOND
ENGINEERING
CONSULTING CIVIL ENGINEERS
6277 DUPONT STATION COURT E., SUITE 1
JACKSONVILLE, FL 32217
(904) 306-0162 PHONE (904) 306-2185 FAX

Exhibit 5
Page 1 of 1

2-A

NOT FOR CONSTRUCTION, NOT FOR BIDDING - FOR REGULATORY REVIEW ONLY - 02-20-2019